

April, 2006



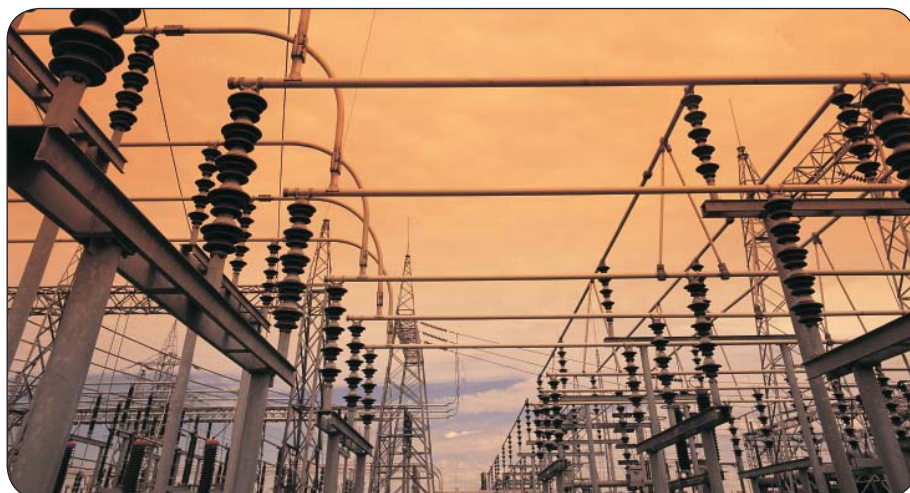
NEW ZEALAND



Customer profile

Vector is the largest owner and manager of multiple network infrastructures in New Zealand, with a portfolio of businesses and services delivering electricity, gas, and high-speed broadband voice and data communications in the Auckland and Wellington regions.

Vector's core enterprise is the delivery of high quality and reliable power to more than one million homes and businesses across New Zealand. A division of Vector is UnitedNetworks, the electricity distribution company which operates more than 15,000 kms of lines and cables through 13 grid exit points, 14,749 distribution substations, and 72 zone substations.



Market data

- Privately owned network infrastructure company
- Other: Electrical distribution

Keywords

- Vector, New Zealand
- PowerLogic ION Enterprise, ION 7700, ION 7600
- Distribution, substation,
- Broadband network

Customer needs

- Upgrade bulk metering to intelligent substation standards
- Verify PQ delivered to customers against published service levels
- Reducing equipment maintenance and replacement costs
- Redundant communication architecture to minimize the risk of metered information loss during transfers

Merlin Gerin

Square D

Telemecanique

Benefits

- Power quality monitoring
- Power quality report verification
- Load control
- Reduced demand charges
- Data sharing with SCADA



Vector staff at the ION Enterprise® workstation in the control room.

Schneider Solution

To support their customer satisfaction goals, we helped Vector upgrade its bulk metering system. The upgrade was an opportunity to take the first steps toward an “intelligent substation” solution.

The vision included direct data transmission over the Internet as well as high-speed Ethernet, automatically generated reports for data sharing within the company and with customers, and advanced power quality analysis. The system can also send emails or serve data straight to web pages, so personnel have access to the same data at the same time, wherever they are.

Project procedure

Older metering equipment, was replaced with intelligent PowerLogic ION meters, installed on every feeder at all points of supply where energy enters Vector's network from the grid. Meter data is wholly aggregated to provide point of supply totals and a network total.

ION Enterprise® energy management software monitors demand and load shedding, raising alarms to protect Vector's equipment from over-loading, and minimize demand charges from the utility. A network of meters also monitors power quality at many city substations and feeds real-time data back to the central analysis computer.

Products

- PLS
 - PowerLogic ION Enterprise
 - ION 7700, ION 7600, ION 7500



Schneider Electric Industries SAS

As standards, specifications and designs change from time to time, please ask for confirmation of the information given in this publication.